

SaatiCare[®]

PRECISION FABRICS
FOR HEALTHCARE APPLICATIONS



Perfecting the art of precision woven fabric



SaatiTech is a member of the worldwide Saati Group of companies, with a long history of manufacturing and distributing precision woven fabrics. Over the past six decades, SaatiTech has perfected the technology of manufacturing fabrics to a high degree of precision. Every phase of production is carefully monitored, employing frequent in-house testing and rigorous inspection to ensure consistent quality. These fabrics are manufactured in Class 10,000 Clean Rooms in accordance with UNI ISO 9001 regulations and certified to USP Class VI.

Unsurpassed customer support

With business offices and warehouses throughout the world, SaatiTech provides strong local support, expert response to customer inquiries, and quick delivery to all locations.

SaatiTech Sales Representatives and Engineers are committed to the SaatiTech tradition of continuous innovation. They understand their customers' applications and offer the most appropriate product in a form that best meets their customers' needs. The continuing success of SaatiTech is founded on the company's ability to design and manufacture innovative, precision woven fabrics that meet the needs of its customers' most demanding applications.



SaatiTech monitors the quality of every phase of production



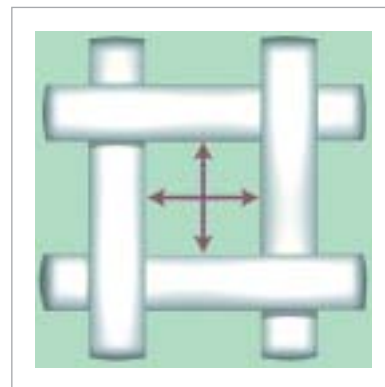
Medical and diagnostic devices

Among the most demanding fabric applications are medical and diagnostic devices. SaatiCare healthcare fabrics are more than up to the task; they are the preferred choice for arterial and transfusion filters, diagnostic test kits, collection reservoirs, biopsy bags, oxygenators, and flow control devices. The precise aperture size, uniform high flow rates, and lot-to-lot consistency make SaatiCare fabrics the ideal solution for demanding healthcare applications.

Manufactured to the most exacting standards

SaatiCare fabrics are woven with monofilament polyester or polyamide fibers with smooth and uniform surfaces that are particularly suitable for medical applications. The monofilament fibers are non-shedding to reduce the risk of particulate contamination. The fibers are woven to exceptionally tight tolerances, creating uniform pore sizes, excellent strength, and good dimensional stability.

The industry standard for medical and diagnostic applications

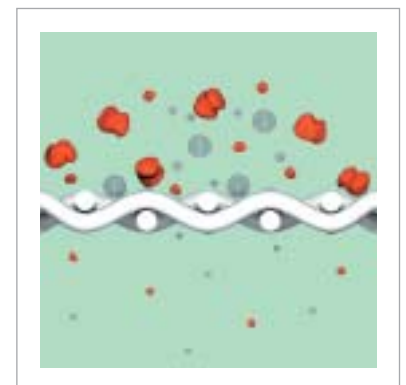


Precise pore size

Customized to meet specific customer needs

SaatiCare is committed to creating innovative, customized solutions. If standard fabric finishes won't do the job, SaatiCare engineers will modify the fabric surface to enhance performance. Plasma coatings, dyeing in virtually any color, and special finishes to enhance priming or wicking properties — they're all available to meet unique customer requirements.

High flow rates with low pressure loss



SaatiCare[®] for medical applications



SaatiCare healthcare fabrics are ideal for critical applications such as arterial and transfusion filters...



High-performance features for medical applications

Precise pore sizes provide exceptionally selective filtration. Particulates and air bubbles of a specific size can be removed without affecting red blood cells.

High open areas provide high flow rates with minimal pressure loss.

The uniform pressure drop provides consistent air pressure monitoring in spirometers.

Smooth monofilament fibers and straight-through flow paths reduce the risk of hemolysis.

Fabrics for medical applications can be specially finished to reduce pyrogens and contaminants.

--- SaatiCare fabrics conform to USP Class VI.

--- Fabrics are safe for gamma sterilization and autoclaving.

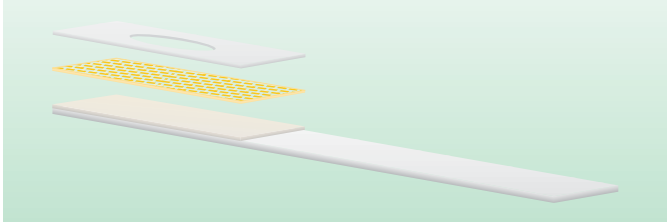


...and collection reservoirs, oxygenators, and flow control devices.

MEETING EXACTING DEMANDS

SaatiCare[®] for diagnostic applications

High-performance screen membranes for critical diagnostic tests



SaatiCare fabrics enable diagnostic tests to be performed at their maximum level.

SaatiCare fabrics function as pre-filters, spacers, supports, sample collectors, conductive paths, and flow control media.

They're used for fluid handling, sample preparation, reagent delivery, and as a carrier for membranes.

The uniform mesh-type weave provides high wicking (lateral flow) rates for faster assay performance.

Materials, pore sizes, flow rates, and surface treatments can be selected to provide the maximum performance for a specific device.

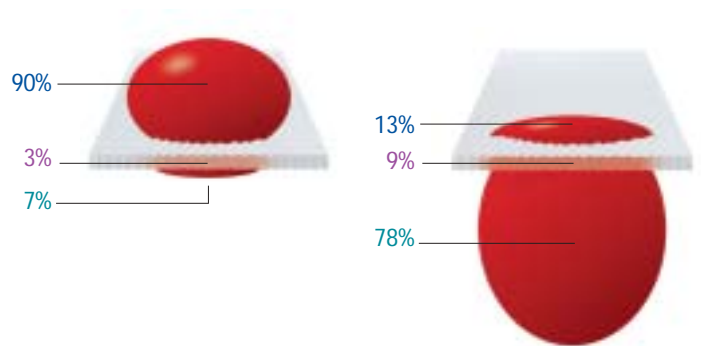
SaatiCare Hyphyl™ - A surfactant coating with superb hydrophilic properties

SaatiCare Hyphyl is a unique hydrophilic surfactant coating that dramatically increases the amount of liquid transferred to lower layers of a test strip, as well as increasing the spreading area of a drop of liquid.

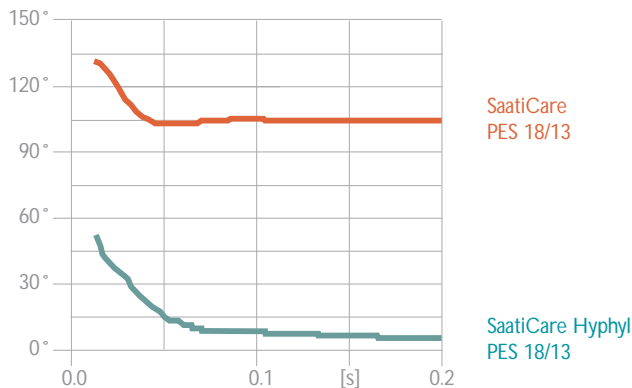
Volume of liquid transferred

SaatiCare PES 18/13

SaatiCare Hyphyl PES 18/13

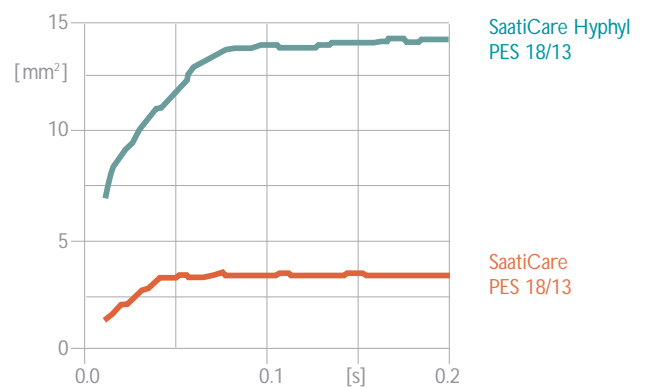


Dynamic contact angle: Hyphyl-treated vs standard fabric



The lower contact angle of SaatiCare Hyphyl indicates it is more hydrophilic.

Wet area: Hyphyl-treated vs standard fabric



A 4-microliter drop of de-ionized water can wet an area almost five times greater using Hyphyl-treated fabrics.

Fabrication capabilities



Heat- or ultrasonic-slit rolls



Single- and double-seamed tubes

High-quality, cost-effective custom fabrication

SaatiCare fabrics can be provided in a wide variety of finished or partly finished products. Specially designed processing equipment can create quality custom-fabricated parts in the most cost-effective way. SaatiCare fabrics can be cut into ribbons, pleated, or formed into tubes, or made into any required shape. Critical fabricated parts are processed in Class 10,000 clean rooms.

When SaatiTech engineers design a part for custom fabrication, their primary consideration is to produce a high-quality precision product that will remain consistent from order to order, year after year.



A variety of custom forms can be created using laser, ultrasonic, heat, pleating, and cold-cutting techniques.

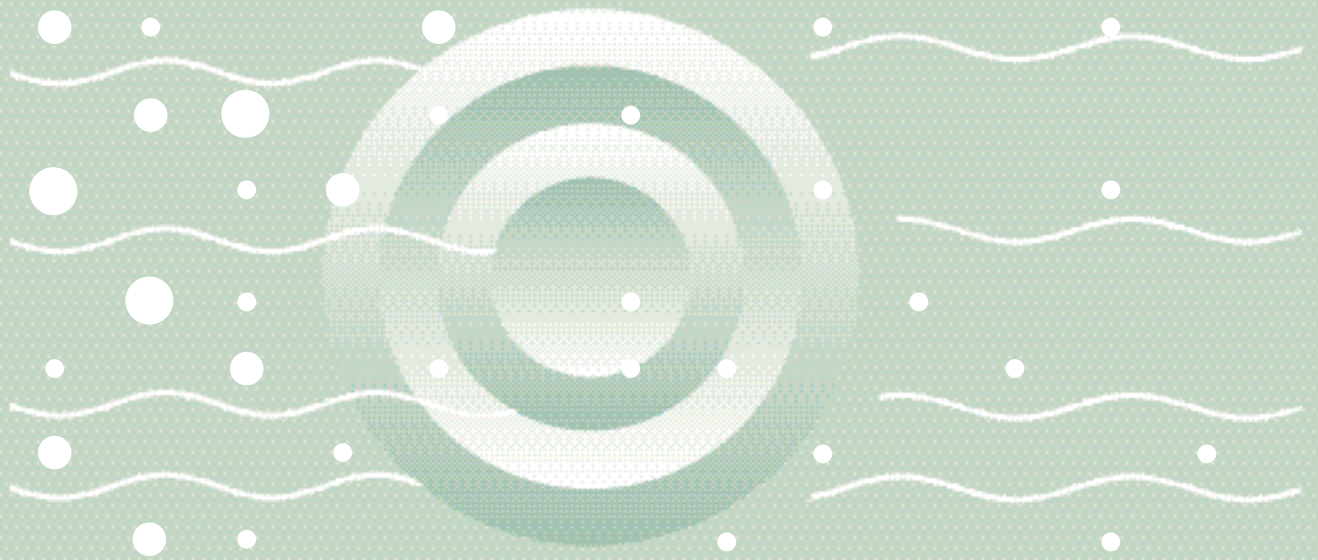
SaatiCare®



Technical Information Sheets

- World Headquarters
SAATITECH S.P.A.
Via Como, 14
22070 Veniano (CO)
Italy
Phone: (+39) 031 891333
Fax: (+39) 031 890482
Email: info.IT@saatitech.it
- SAATITECH FRANCE
Division de Saati France S.A.
46, rue Lauriston
75016 Paris
France
Phone: (+33) 1 56265040
Fax: (+33) 1 44050015
Email: info.FR@saatitech.com
- U.S.A.
SAATITECH, INC.
247 Route 100
P.O. Box 543
Somers, NY 10589
Phone: (914) 767 0100
Fax: (914) 767 0109
Email: info.US@saatitech.com
- SAATITECH DO BRASIL
Division of Saati do Brasil Ltda
rua Flávio Beltrame, 235
13422-140 Bairro Unileste
Piracicaba-SP-Brasil
Phone: (+55) 19 34241442
Fax: (+55) 19 34242594
Email: info.BR@saatitech.com

Web site: www.saatitech.com



Polyester	Mesh Opening	Open Area	Mesh Count	Thread Diameter	Weight	Thickness	Air Permeability	Porosity ¹	Holding ² Capacity
							20 mm WG		
	[µm]	[%]	[n/cm]	[µm]	[g/m ²]	[µm]	[l/m ² s]	[%]	[µl/cm ²]

PES 1650/64	1650	64	5	460	220	840	n.a.	80	66,9
PES 1410/49	1410	49	5	600	405	1100	9750	73	80,4
PES 1180/58	1180	58	6,5	385	210	715	11000	78	55,9
PES 890/44	890	44	7,5	460	370	875	9175	70	61,0
PES 850/55	850	55	9	280	160	530	n.a.	78	41,6
PES 840/50	840	50	9,5 x 8	350	240	660	9350	73	48,3
PES 810/55	810	55	9,5	280	170	533	10100	77	41,2
PES 740/53	740	53	10	260	147	465	10600	76	35,5
PES 700/68	700	68	12	145	55	275	n.a.	85	23,5
PES 700/52	700	52	10,5	260	155	478	9950	75	34,4
PES 695/45	695	45	9,5 x 10	350	260	680	9050	71	48,5
PES 580/47	580	47	12	260	184	485	9100	72	35,1
PES 530/50	530	50	13,4	220	146	400	9225	73	29,4
PES 500/32	500	32	12	385	400	750	6700	60	44,8
PES 475/50	475	50	15	200	138	365	9200	73	26,6
PES 430/53	430	53	17	145	81	256	9800	77	19,8
PES 400/52	400	52	18	160	105	285	9550	74	21,0
PES 400/38	400	38	15	260	235	540	8600	69	37,4
PES 400/35	400	35	15	260	235	460	6800	63	28,8
PES 370/50	370	50	19	160	110	290	8950	72	21,0
PES 350/31	350	31	16	260	270	470	5925	60	28,4
PES 340/50	340	50	21	145	98	260	9475	72	18,7
PES 330/46	330	46	21	160	120	285	8400	67	18,6
PES 300/35	300	35	20	200	185	355	6950	62	21,8
PES 290/50	290	50	24	120	84	216	8750	74	15,9
PES 285/44	285	44	23	145	110	255	8220	68	17,5
PES 275/43	275	43	24	145	115	245	7600	66	16,1
PES 265/53	265	53	27	100	63	160	9150	72	11,6
PES 260/62	260	62	32 x 28	70	34	122	10450	81	9,8
PES 250/44	250	44	27	120	95	222	8200	72	16,3
PES 250/37	250	37	24	160	153	274	6600	62	17,0
PES 245/61	245	61	32	70	35	110	10200	77	8,5
PES 235/37	235	37	26	145	135	275	6900	66	18,3
PES 220/41	220	41	29	120	101	218	7500	68	14,8
PES 220/35	220	35	27	145	130	255	6500	62	15,8
PES 200/43	200	43	32	100	75	160	7550	67	10,7
PES 190/45	190	45	36	90	70	145	7850	67	9,7
PES 190/38	190	38	32	120	107	205	6260	62	12,7
PES 190/32	190	32	29	145	135	258	5800	55	13,0
PES 185/41	185	41	34	100	81	173	6975	67	11,6
PES 175/34	175	34	34	120	118	210	5870	60	12,6
PES 170/53	170	53	43	64	43	100	9425	71	7,1
PES 170/44	170	44	40	80	58	135	7825	67	8,8
PES 170/42	170	42	38	90	74	161	7000	68	11,0
PES 170/36	170	36	36	110	100	195	5750	61	11,6
PES 160/40	160	40	40	90	75	148	6600	63	9,4
PES 160/33	160	33	36	120	124	255	6825	68	18,4
PES 150/43	150	43	43	80	64	138	6620	65	8,6
PES 150/33	150	33	39	100	100	180	6700	63	11,4
PES 148/47	148	47	45	70	50	115	7700	68	7,9
PES 145/40	145	40	45	80	65	137	6650	64	8,6
PES 145/26	145	26	36	120	122	205	4850	56	11,5
PES 140/35	140	35	43	90	81	157	5375	62	9,8
PES 130/40	130	40	49	70	56	116	6500	65	7,6
PES 120/52	120	52	59	48	34	80	7950	72	5,8
PES 120/41	120	41	55	64	51	105	6300	64	6,7
PES 120/38	120	38	51	70	58	118	6550	64	7,6
PES 120/35	120	35	49	80	72	138	5740	60	8,2
PES 120/33	120	33	50	80	89	145	1500	62	9,0
PES 115/29	115	29	46	90	85	155	4750	59	6,1
PES 110/31	110	31	51	80	75	129	5550	57	7,3
PES 105/52	105	52	69	40	25	63	8275	71	4,5
PES 105/33	105	33	55	70	65	114	5400	60	6,8
PES 105/17	105	17	40	145	187	280	3900	48	13,4
PES 95/27	95	27	55	80	85	140	4025	56	7,9
PES 90/32	90	32	62	64	57	106	4800	59	6,3
PES 89/36	89	36	68	55	48	89	5450	61	5,4

Polyester	Mesh Opening	Open Area	Mesh Count	Thread Diameter	Weight	Thickness	Air Permeability	Porosity ¹	Holding ² Capacity
							20 mm WG		
	[µm]	[%]	[n/cm]	[µm]	[g/m ²]	[µm]	[l/m ² s]	[%]	[µl/cm ²]

PES 85/44	85	44	79	40	32	75	6925	72	5,4
PES 85/37	85	37	71	55	48	98	5720	64	6,2
PES 80/33	80	33	71	55	51	91	4670	60	5,4
PES 80/24	80	24	62	70	74	121	4050	56	6,8
PES 78/36	78	36	77	48	43	80	5280	63	5,0
PES 75/29	75	29	73	55	52	92	4875	59	5,4
PES 73/52	73	52	100	27	17	42	8025	72	3,0
PES 73/33	73	33	79	48	44	83	5100	63	5,2
PES 72/28	72	28	71	64	67	116	n.a.	58	6,7
PES 70/28	70	28	77	55	55	90	3750	55	5,0
PES 70/21	70	21	67	70	80	117	2925	50	5,9
PES 68/38	68	38	90	40	32	62	5825	61	3,8
PES 68/24	68	24	73	64	75	115	3820	56	6,4
PES 65/37	65	37	95	40	35	65	5190	60	3,9
PES 65/20	65	20	68	70	81	120	2900	51	6,1
PES 55/31	55	31	100	40	37	65	4500	57	3,7
PES 55/27	55	27	90	48	50	81	3525	56	4,5
PES 53/40	53	40	120	31	27	48	4700	59	2,9
PES 53/35	53	35	110	34	30	56	4550	62	3,5
PES 51/18	51	18	83	60	68	108	2990	52	5,7
PES 50/14	50	14	74	80	110	153	1650	46	7,0
PES 48/18	48	18	90	55	65	100	2675	53	5,3
PES 47/31	47	31	120	34	33	64	4800	64	4,1
PES 47/26	47	26	110	40	39	64	3500	56	3,8
PES 45/29	45	29	120	34	33	54	3760	56	3,0
PES 45/20	45	20	100	48	55	87	3550	55	4,8
PES 45/12	45	12	77	80	120	175	n.a.	49	8,6
PES 43/36	43	36	140	27	24	42	4200	59	2,5
PES 42/14	42	14	90	60	77	104	1880	45	4,7
PES 41/28	41	28	130	34	37	60	3575	58	3,5
PES 41/23	41	23	120	40	45	70	3200	53	3,7
PES 41/14	41	14	90	64	86	125	2125	51	6,7
PES 40/16	40	16	100	48	56	81	1920	49	4,0
PES 40/11	40	11	80	80	127	165	1000	43	7,1
PES 39/26	39	26	130	34	37	55	2900	52	2,9
PES 38/31	38	31	150	27	25	48	4550	62	3,0
PES 38/28	38	28	140	31	31	48	3150	51	2,5
PES 38/20	38	20	120	40	45	67	2225	49	3,3
PES 35/27	35	27	150	27	25	44	4680	57	2,5
PES 35/15	35	15	110	48	65	91	2125	51	4,7
PES 35/11	35	11	94	64	100	134	1500	49	6,6
PES 34/27	34	27	150	31	32	55	3500	56	3,1
PES 32/28	32	28	165	27	29	58	3950	66	3,8
PES 32/20	32	20	140	34	40	60	2675	54	3,2
PES 30/25	30	25	165	27	29	46	2730	54	2,5
PES 30/24	30	24	165	31	35	60	2800	55	3,3
PES 29/20	29	20	150	31	32	49	2475	48	2,4
PES 29/16	29	16	140	34	40	56	1970	49	2,7
PES 28/17	28	17	150	34	43	61	2175	51	3,1
PES 27/14	27	14	140	40	52	70	1500	43	3,0
PES 26/9	26	9	120	48	71	97	1180	49	4,8
PES 25/20	25	20	180	27	33	52	2650	57	3,0
PES 25/17	25	17	165	31	38	49	1600	41	2,0
PES 25/16	25	16	165	34	49	66	1700	50	3,3
PES 25/13	25	13	150	34	43	56	1200	44	2,5
PES 25/11	25	11	130	40	49	63	970	40	2,5
PES 23/17	23	17	180	31	40	56	1775	47	2,6
PES 23/13	23	13	155	34	48	58	950	44	2,5
PES 21/15	21	15	190	31	45	58	1185	45	2,6
PES 19/6	19	6	125 x 130	48	82	100	575	45	4,5
PES 18/13	18	13	200	31	48	60	775	42	2,5
PES 15/10	15	10	200 x 215	31	50	59	675	38	2,2
PES 12/6	12	6	190 x 205	31 x 34	57	66	375	42	2,8
PES 10/3	10	3	125 x 225	34 x 40	60	80	275	43	3,9
PES 7/2	7	2	125 x 260	34 x 40	70	85	60	39	3,3

Polyamide	Mesh Opening	Open Area	Mesh Count	Thread Diameter	Weight	Thickness	Air Permeability	Porosity ¹	Holding ² Capacity
							20 mm WG		
	[µm]	[%]	[n/cm]	[µm]	[g/m ²]	[µm]	[l/m ² s]	[%]	[µl/cm ²]
PA1560/61	1560	61	5	450	190	840	10800	81	67,7
PA1030/57	1030	57	7,5	325	143	600	10600	79	47,2
PA 940/55	940	55	8	325	163	620	10500	78	48,3
PA 830/55	830	55	9	280	142	530	10000	78	41,6
PA 790/54	790	54	9,5	280	145	515	9950	76	39,4
PA 730/55	730	55	10,5	250	120	450	9975	76	34,3
PA 700/54	700	54	10,75	250	125	450	9875	76	34,1
PA 660/52	660	52	11	250	128	450	9500	75	33,8
PA 630/51	630	51	11,5	250	136	460	9325	74	34,2
PA 620/39	620	39	10	350	245	670	8200	69	46,5
PA 600/59	600	59	13	180	75	310	10800	78	24,2
PA 600/50	600	50	12	250	141	465	9200	73	34,2
PA 590/63	590	63	14	150	56	265	n.a.	82	21,4
PA 590/52	590	52	12,5	225	126	420	9850	75	31,7
PA 560/51	560	51	13	225	130	430	9075	75	32,2
PA 530/49	530	49	13,5	225	137	422	9475	73	30,9
PA 500/47	500	47	14	225	138	432	8800	73	31,5
PA 500/38	500	38	12	300	223	605	7925	70	42,4
PA 475/49	475	49	15	195	110	355	9750	74	26,1
PA 450/48	450	48	15,5	195	112	360	9050	73	26,3
PA 440/46	440	46	16	195	118	360	8400	72	26,0
PA 440/42	440	42	15	225	148	427	8550	70	30,1
PA 420/46	420	46	16,5	195	125	360	8550	71	25,6
PA 410/37	410	37	15	250	180	460	6600	66	30,2
PA 400/46	400	46	17	195	127	365	8125	71	25,8
PA 375/43	375	43	18	180	110	330	8525	71	23,3
PA 365/43	365	43	18	195	135	350	8075	67	23,5
PA 355/51	355	51	20	150	85	264	9550	72	19,0
PA 350/35	350	35	17	225	175	435	6675	66	28,9
PA 345/50	345	50	20,5	150	88	270	9150	72	19,4
PA 335/49	335	49	21	150	90	266	9250	71	18,8
PA 330/35	330	35	18	225	182	425	6250	63	26,9
PA 325/49	325	49	22	140	84	256	9100	72	18,5
PA 310/47	310	47	22	150	98	277	8425	70	19,5
PA 300/56	300	56	25	100	46	185	10350	78	14,4
PA 300/46	300	46	23	140	88	265	8525	72	19,0
PA 290/45	290	45	23,5	140	90	262	8350	71	18,6
PA 280/43	280	43	24	140	92	258	8400	70	18,0
PA 275/54	275	54	27	100	49	182	9950	76	13,8
PA 275/33	275	33	21	195	160	370	6250	63	23,3
PA 270/41	270	41	24	150	102	280	7700	68	18,9
PA 265/47	265	47	26	120	73	223	8800	72	16,1
PA 255/46	255	46	27	120	76	226	8300	71	16,2
PA 245/43	245	43	27,5	120	78	227	7900	71	16,1
PA 240/44	240	44	28	120	79	225	7925	70	15,8
PA 235/39	235	39	27	140	103	260	7100	66	17,1
PA 225/42	225	42	29	120	85	220	7300	70	16,0
PA 220/47	220	47	32	100	61	180	8700	71	12,7
PA 215/37	215	37	29	140	109	260	6050	63	16,3
PA 200/34	200	34	29,5	140	111	260	5900	62	16,1
PA 195/43	195	43	34	100	65	180	7375	69	12,3
PA 185/37	185	37	32	120	92	223	6525	63	13,2
PA 180/43	180	43	36	100	67	185	7400	67	12,5
PA 175/42	175	42	38	90	61	170	7375	70	11,9
PA 170/55	170	55	43	61	30	105	8700	75	7,9
PA 170/42	170	42	40	90	63	165	7100	67	11,1
PA 165/32	165	32	34	120	98	230	5700	64	14,6
PA 160/43	160	43	43	80	50	144	7500	68	9,8
PA 155/49	155	49	45	70	42	120	8200	70	8,4
PA 155/39	155	39	41	90	68	165	6100	66	10,9
PA 155/31	155	31	36	120	102	264	n.a.	68	17,8
PA 153/30	153	30	36	120	105	240	5400	63	15,0
PA 150/51	150	51	48	61	32	110	8800	73	8,1
PA 140/55	140	55	55	50	24	84	n.a.	73	6,2
PA 140/36	140	36	43	90	72	175	6150	66	11,6
PA 135/42	135	42	49	70	47	127	7200	68	8,7
PA 135/39	135	39	46	80	55	135	7050	63	8,5

Polyamide	Mesh Opening	Open Area	Mesh Count	Thread Diameter	Weight	Thickness	Air Permeability	Porosity ¹	Holding ² Capacity
							20 mm WG		
	[µm]	[%]	[n/cm]	[µm]	[g/m ²]	[µm]	[l/m ² s]	[%]	[µl/cm ²]

PA 135/27	135	27	40	120	110	261	5800	63	16,5
PA 125/38	125	38	49	80	57	145	6300	63	9,2
PA 120/44	120	44	55	61	38	110	7400	69	7,6
PA 116/41	116	41	55	61	38	110	n.a.	69	7,6
PA 115/37	115	37	55	70	58	123	6100	63	7,7
PA 115/35	115	35	51	80	61	140	5725	60	8,4
PA 105/32	105	32	55	80	66	140	5200	56	7,9
PA 100/38	100	38	62	61	43	104	6300	62	6,5
PA 90/35	90	35	66	61	46	108	5600	61	6,6
PA 90/30	90	30	62	70	59	127	4680	59	7,4
PA 85/49	85	49	81	37	21	64	7650	72	4,6
PA 83/33	83	33	70	61	52	113	5050	60	6,8
PA 80/37	80	37	77	50	34	83	6000	61	5,0
PA 80/32	80	32	71	61	50	111	5075	59	6,5
PA 79/39	79	39	81	50	36	87	5480	60	5,2
PA 77/46	77	46	88	37	22	67	7090	70	4,7
PA 75/23	75	23	62	80	74	140	3825	49	6,9
PA 70/49	70	49	100	30	17	53	7400	72	3,8
PA 68/37	68	37	90	44	32	75	5300	60	4,5
PA 64/47	64	47	105	30	18	55	6900	72	3,9
PA 64/25	64	25	77	61	55	109	3750	54	5,8
PA 62/40	62	40	100	37	26	66	5560	65	4,3
PA 60/29	60	29	90	50	41	85	4550	58	5,4
PA 56/31	56	31	100	44	36	81	4300	58	4,7
PA 55/43	55	43	120	30	20	52	5600	67	3,7
PA 52/32	52	32	110	38	30	70	4550	61	4,3
PA 50/27	50	27	105	44	38	81	3750	56	4,5
PA 44/27	44	27	120	38	35	72	4000	59	4,3
PA 42/25	42	25	120	38	35	67	3325	55	3,7
PA 40/26	40	26	130	38	36	74	3300	56	4,2
PA 39/29	39	29	140	30	25	53	4225	62	3,5
PA 38/28	38	28	140	30	25	53	4100	59	3,1
PA 35/27	35	27	150	30	26	57	4100	60	3,4
PA 32/20	32	20	140	37	36	68	2800	51	3,5
PA 31/21	31	21	150	37	40	68	2300	47	3,2
PA 31/19	31	19	140	38	42	75	2300	53	4,0
PA 30/25	30	25	165	30	28	59	3100	58	3,4
PA 30/19	30	19	145	37	40	64	1925	43	2,7
PA 26/15	26	15	150	38	45	84	1800	55	4,7
PA 25/21	25	21	180	30	31	60	3300	54	3,2
PA 25/15	25	15	165	37	42	75	1530	46	3,4
PA 21/17	21	17	200	30	34	65	1315	52	3,4
PA 18/14	18	14	205	30	35	57	1060	43	2,5
PA 15/11	15	11	205 x 220	30	38	58	650	42	2,4
PA 10/4	10	4	200 x 220	30 x 38	50	78	200	44	3,4
PA 7/2	7	2	200 x 230	30 x 38	52	78	90	42	3,3

The technical specifications are nominal values obtained through testing.

In accordance with our policy of continuously improving our products, the above technical specifications are subject to change without notice.

■ **Routinely produced**

1 also referred to as **OPEN VOLUME**

2 also referred to as **BED VOLUME**

World Headquarters
SAATITECH S.P.A.
Via Como, 14
22070 Veniano (CO)
Italy
Phone: (+39) 031 891333
Fax: (+39) 031 890482
E-mail: info.IT@saatitech.com

SAATITECH FRANCE
Division de Saati France S.A.
46, rue Lauriston
75016 Paris
France
Phone: (+33) 1 56265040
Fax: (+33) 1 44050015
E-mail: info.FR@saatitech.com

U.S.A.
SAATITECH, INC.
247 Route 100
P.O. Box 543
Somers, NY 10589
Phone: (914) 767 0100
Fax: (914) 767 0109
E-mail: info.US@saatitech.com

SAATITECH DO BRASIL
Division of Saati do Brasil Ltda
rua Flávio Beltrame, 235
13422-140 Bairro Unileste
Piracicaba-SP-Brasil
Phone: (+55) 19 34241442
Fax: (+55) 19 34242594
E-mail: info.BR@saatitech.com

Web Site: www.saatitech.com